

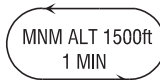
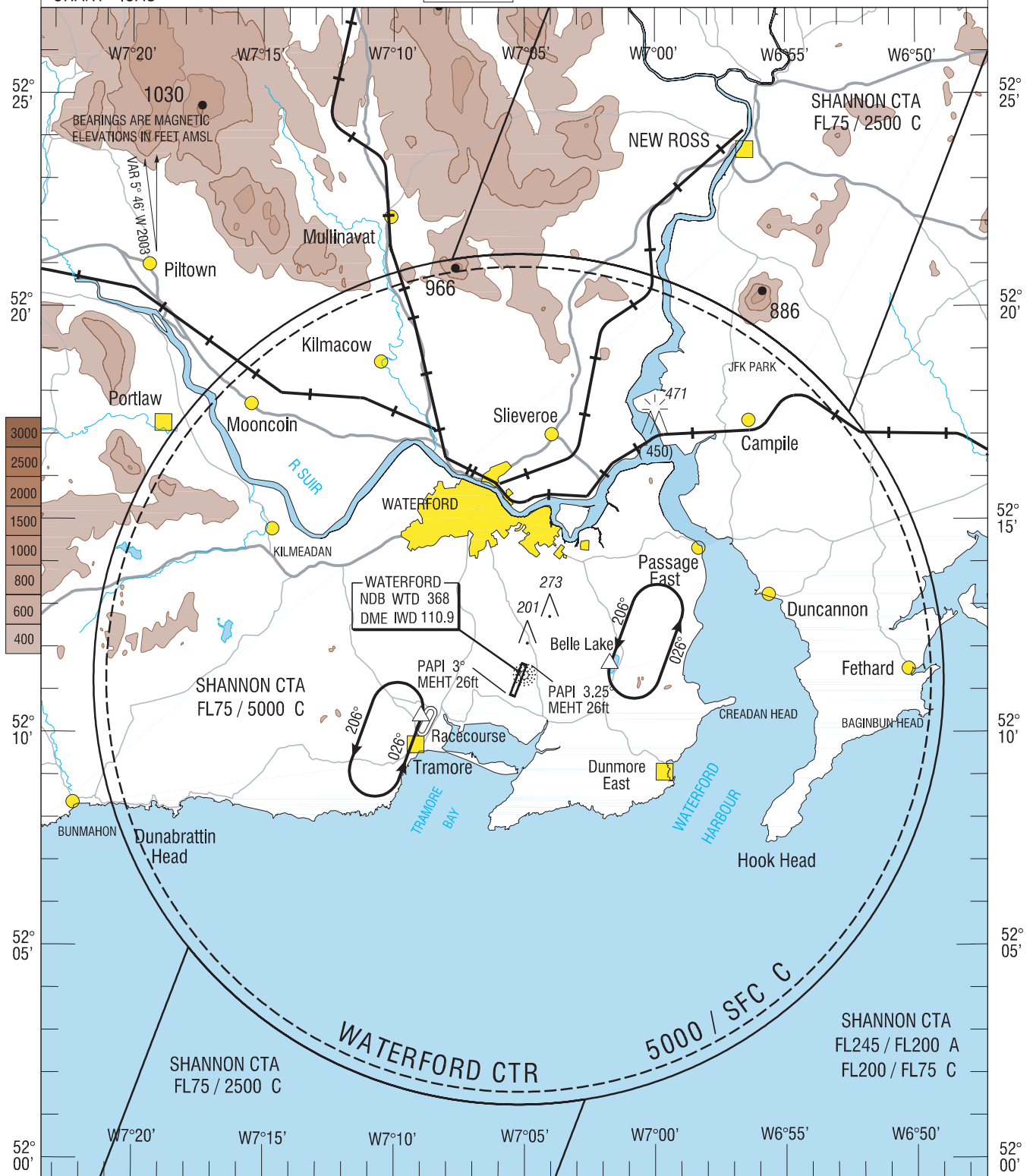
VISUAL APPROACH CHART - ICAO

AERODROME ELEV 119 ft

TWR 129.85
ATIS 121.15
Emerg 121.5

CONSULT NOTAM FOR LATEST INFORMATION

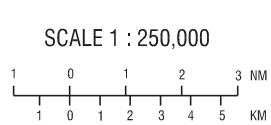
WATERFORD / WATERFORD



Visual Holding Pattern
(Based on TAS 120 kts)

Belle Lake 52°11'35.56" N 007°01' 42.64" W
Tramore
Racecourse 52°10' 21.65" N 007°08' 55.62" W

Note 1: In the event of a radio failure :
- Aircraft from the East, route via Baginbun Head not above 1500ft to the Belle Lake Hold
- Aircraft from the West, route via Bunmahon not above 1500ft to the Tramore Racecourse Hold to receive landing instructions from the Control Tower using the ALDIS lamp.



Mapping based on Ordnance Survey Ireland by Permission of the Government (C) Government of Ireland Permit Number 7109

CHANGE : New Chart